



SPLISH SPLASH!

A DAY ON THE LAKE

THE
G
O
O
D
M
A
N

1

0

0

YEARS

WELCOME

We are thrilled to be part of The Goodman's highly interactive and inspiring Theater for the Very Young programming with *Splish Splash: A Day on the Lake!*

Empathy and courage are some of the most important things an audience can gain from participating in theater, and we've created an experience for our youngest audience members that will do just that. This show is all about community and how helping new friends can lead us to achieving a larger goal together. *Splish Splash* creates a space that empowers young people to exemplify empathy. By helping the different animal characters in our Lake Michigan adventure, we feel how empathy can support our community—a rising tide lifts all boats.

Splish Splash was carefully crafted with the help of our youngest collaborators: 2- to 5-year-olds from Total Child Preschool. Through weekly workshops, the ideas of young people were incorporated into the show and helped to shape every element. This agency in the creative process is mirrored for audience members in the show they are about to see. These young sailors will play an active role in helping our characters move through the story.

We can't wait to welcome you aboard for a magical journey around Lake Michigan!

— **Jamal Howard and Ellie Levine**
Co-Creators and Co-Directors



WHAT TO EXPECT

Splish Splash: A Day on the Lake is part of The Goodman's Theater for the Very Young program—theatrical experiences made especially for children ages 0-5 and the grown-ups in their lives. This work is built on a simple belief that we hold close: young children deserve theater created just for them—full of care, imagination, magic and joy.

Theater for the Very Young is designed around how children naturally learn and explore the world around them. Through music and movement, storytelling and play, costume and sound, these performances invite you and your little one into immersive, sensory-rich experiences.

A few friendly invitations as we begin: this is an interactive show, so if you see something you love, clap away. If something makes you laugh, let it out. Wiggles are welcome. Sometimes our performers may even invite you or your child to join them—if that sounds fun, you're welcome to say yes.

And grown-ups, this one's especially for you. Today, this space is officially a No Shush Zone! This play was made to be played with, and kids are invited to be kids. There's no "right" way to watch—children are welcome to react, move, laugh, point, gasp and wonder out loud. Those moments aren't interruptions; they're part of the magic.

We do ask everyone to help keep the space safe by staying aware of moving performers and listening if an actor asks for a little extra room. Together, we'll take care of ourselves, our neighbors and the artists sharing the space with us.

Above all, remember: big feelings, brave choices and curious questions are always welcome here!

We make Theater for the Very Young because beginnings matter. These early moments with the arts spark imagination, nurture creativity and help build empathy, courage and connection—things we hope you carry with you long after today's performance ends.

So welcome aboard, settle in, lean close and enjoy the adventure!



— **Jared Bellot**
Clifford Director
of Education and
Engagement

THANK YOU TO
OUR SPONSORS

WINTRUST[®]

IN THE *community*

COMMUNITY PROGRAMS
SPONSOR

KIRKLAND & ELLIS

ARTS IN COMMUNITY
SPONSOR

THE
GOODMAN

SUSAN V. BOOTH,
WALTER ARTISTIC DIRECTOR

JOHN COLLINS,
EXECUTIVE DIRECTOR

PRESENTS

**SPLISH SPLASH:
A DAY ON THE LAKE**

CREATED AND DIRECTED BY
JAMAL HOWARD AND ELLIE LEVINE

SET, PROP AND COSTUME DESIGN BY
JILLIAN GRYZLAK

SOUND DESIGN BY
STEPHAN MOORE

CASTING BY
LAUREN PORT, CSA

Created in collaboration with Northwestern University's
Imagine U, Northwestern undergraduate students,
and 2- to 5-year-olds from Total Child Preschool

CAST

SPLASH	KYLIE ANDERSON
SPLISH.....	SONIA GOLDBERG
BLUE HERON.....	TINA MUÑOZ PANDYA
SAILOR.....	MICHAEL-ELLEN WALDEN

Understudies never substitute for a listed player unless an announcement is made.

ADDITIONAL STAFF

LINE PRODUCER	JARED BELLOT
PRODUCTION MANAGER	CLAUDETTE PRZYGODA
PRODUCTION ASSOCIATE	JOJO WALLENBERG
PRODUCTION ASSISTANT	LAUREN WESTFAHL
BUILD ASSISTANT	ELLIE TERRELL
BUILD ASSISTANT	KEVIN RIEG

For a list of additional staff members, visit GoodmanTheatre.org.

DEvised IN COLLABORATION WITH:

MADELYN CANTZLER
LAURA FAJARDO-RIASCOS
GRACE HALL
ANI LAWIT
ANDREW MCCARTHY

KENNEDY NASEEM
SOPHIE PONG
AJAYLA SELF
ELLA WAFFNER

Goodman productions are made possible in part by the Illinois Arts Council, a state agency and the Chicago Department of Cultural Affairs and Special Events.

Goodman Theatre is a constituent of the Theatre Communications Group, Inc., the national service organization of nonprofit theaters; the League of Resident Theatres; the Illinois Arts Alliance and the American Arts Alliance; the League of Chicago Theatres; and the Illinois Theatre Association.

Goodman Theatre operates under agreements between the League of Resident Theatres and Actors' Equity Association, the union of professional actors and stage managers in the United States; the Society of Stage Directors and Choreographers, Inc., an independent national labor union; the United Scenic Artists of America, Local 829, AFL-CIO and the Chicago Federation of Musicians, Local No. 10-208, American Federation of Musicians. House crew and scene shop employees are represented by the International Alliance of Theatrical Stage Employees, Local No. 2.

*Denotes member of Actors' Equity Association, the union of professional actors and stage managers in the United States.

PROFILES



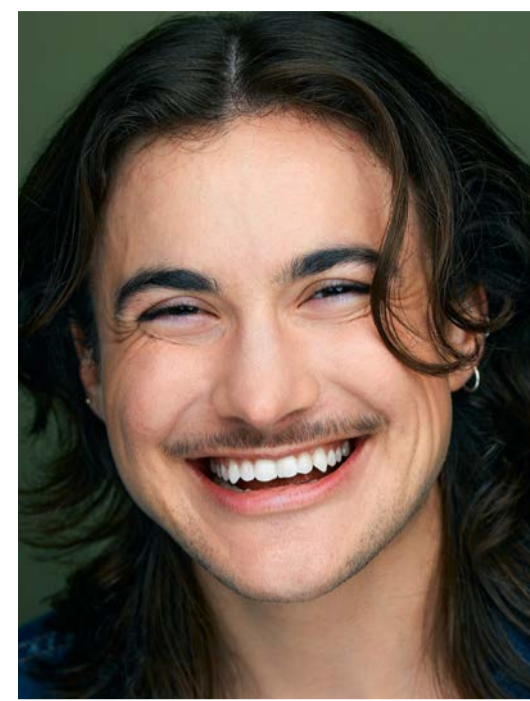
KYLIE
ANDERSON



SONIA
GOLDBERG



TINA MUÑOZ
PANDYA



MICHAEL-
FOREST
WALDEN

KYLIE ANDERSON (KY RAMBO) (*SPLASH*) is excited to return to The Goodman after appearing in *BOOK UP!*. Anderson has understudied *20,000 Leagues Under the Seas*, *Lookingglass Alice* and *Villette* (Lookingglass Theatre). They are currently performing in *The Pets* (Bramble Theatre Company). You can see Anderson as Tanya on HBO's *Station 11* (S1E1). They are a company member at Avalanche Theatre and a founding company member at Bramble Theatre Company. Anderson is represented by Stewart Talent. Find them on Instagram: @ky_rambo_

SONIA GOLDBERG, she/they (*SPLISH*) is a Jeff-nominated performer, writer, educator and a proud Chicago native. Recent credits include *RAIN* (Filament Theatre); *Amélie*, *Into the Woods*, *American Psycho* (Kokandy Productions); *Twelfth Night* (SITC), *Corduroy*, *Measure for Measure* (Chicago Shakespeare Theatre); *A Midsummer Night's Dream* (Oak Park Festival Theatre); *Pippin* (Music Theater Works); and *Once Upon a Mattress* (Theo). She is the Education Programs Coordinator at Court Theatre, and a teaching artist for the Musical Theatre Intensive at Goodman Theatre. They've studied at Butler University, LAMDA and The Moscow Art Theatre School.

TINA MUÑOZ PANDYA, she/her (*BLUE HERON*) is an actor, musician and teaching artist. Chicago credits include: *The Matchbox Magic Flute* (Goodman Theatre); *Dhaba on Devon Ave* (Writers Theatre); *London Road* and *The Tall Girls* (Shattered Globe Theatre); *The Secretaries* (First Floor Theater); *The Mousetrap* (Court Theatre); *Frederick* and *X-Marks the Spot* (Chicago Children's Theatre). Regional credits include: *As You Like It* and *The Old Man and the Old Moon* (Door Shakespeare); *Matt and Ben* (Penobscot Theatre); *House of Joy* (St. Louis Rep); *HMS Pinafore*, *The Pirates of Penzance* and *The Mikado* (The Hypocrites).

MICHAEL-FOREST (MIKEY) WALDEN, they/he (SAILOR) is grateful to be making his Goodman Theatre debut! Chicago acting credits: *Tambo & Bones* (Refracted Theatre Company); *TL;DR* (Theo Ubique); *Bookworms*, *The Conductors* (Kerfuffle); *A Drama In Roger's Park* (Young Kronos, Facility Theatre). Chicago writing/devising credits: *A Bridge to the Moon* (American Musical Theatre Project); *House of Dreams: Purim 5785* (Tzedek Chicago). IG: mikeyfairlight5000

JAMAL HOWARD (CO-CREATOR AND CO-DIRECTOR) is a Chicago-based director, choreographer and producer with a focus on creating courageous and empathetic theater. He was the 2023/2024 Goodman Theatre Michael Maggio Directing Fellow, a member of the Theatre Communication Group's 2024 Rising Leaders of Color Cohort, Co-Artistic Director of New American Folk Theatre and an Associate Company Member with TUTA Theatre. At The Goodman, Howard co-directed *The Lizard y El Sol* and associate directed *In My Granny's Garden*. Other Goodman Theatre credits include *English*, *A Christmas Carol*, *Highway Patrol* and *Antonio's Song*. Select directing and choreography credits include: *Doctor De Soto*, *The Wong Kids*, *Splish Splash* (Northwestern University); *8-Track: The Sounds of the 70s*, *Songs for a New World* (Theo Ubique Cabaret Theatre); *Jacob Marley's Christmas Carol*, *A Gentleman's Guide to Love and Murder* (Backstage Breckenridge Theatre); *R.E.S.P.E.C.T.* (National Tour); *tick, tick... Boom!* (Boho Theatre); *The Apple Tree* (Porchlight Music Theatre); *Think Fast*, *Jordan Chase* (Filament Theatre); *Corduroy*, *The Wiz*, *Magic Tree House: Showtime with Shakespeare* (Emerald City Theatre); *The Wiz*, *The Mole Hill Stories* (Children's Theatre Madison). Howard served as the Associate Artistic Director of Emerald City Theatre where he created inspiring productions that helped Chicago's children creatively face the world. He is an alum of Loyola University Chicago. jamalhoward.com

ELLIE LEVINE, she/her (*CO-CREATOR AND CO-DIRECTOR*) is a director and teaching artist with a focus on puppetry and devised theater for young audiences. She has recently led devising processes for new works and adaptations, including *Splish Splash* and *Imagine That!* (Northwestern University); *Growing Pains* and *Paint a Picture, Stitch a String* (Columbus Children's Theatre); *The Little Prince* (Improv Playhouse); and *Deep Sea Melody* (Arts on the Horizon). Other directing and movement credits include *RAIN: for babies and their carers* (Filament Theatre); *Hershel and the Hanukkah Goblins* (Strawdog Theatre); *Amelia Earhart* (Columbus Children's Theatre). Levine is a teaching artist with Chicago Children's Theatre, Lookingglass and Filament Theatre. She is an adjunct professor at Northwestern University where she teaches Theater for the Very Young. Ellie received her masters from the University of Kent in Canterbury, England, where she wrote her dissertation on developing an inclusive approach to physical theater that centers curiosity and joy in the creative process.

JILLIAN GRYZLAK, she/her (*SET, PROP AND COSTUME DESIGNER*) is thrilled to be part of *Splish Splash*. She makes puppets, props and is an arts educator. Previous Goodman Theatre credits include *A Christmas Carol 2023, 2024* as puppet designer and maker. Select collaborations include *She Who Dared, Falstaff* (Chicago Opera Theater); *Imagine That* (Northwestern University); numerous productions with Redmoon, and mural installations across Chicago schools. Gryzlak is also part time faculty in the Department of Fine and Performing Arts at Loyola University Chicago, where she is Prop Artisan and teaches in the Teaching Artist Minor. @jgryzlak

STEPHAN MOORE, he/him (*SOUND DESIGNER*) is a sound artist, designer, composer, improviser, programmer, engineer, teacher and curator based in Chicago. He is the co-founder of the Chicago Laboratory for Chicago Laboratory for Electro-Acoustic Theater (CLEAT) at the Elastic Arts Foundation, which promotes and encourages the creation of multichannel audio works. From 2004-2010, he was the touring sound engineer with the Merce Cunningham Dance Company. He has been on the faculty of Northwestern University for 10 years. This is his first production with The Goodman.

LAUREN PORT (CASTING) joined The Goodman as Casting Director in August of 2019 after eleven years casting in NYC, where she worked on many Goodman productions over the years, including *Father Comes Home from the Wars, Parts 1, 2 and 3*, *Uncle Vanya*, *The Sign in Sidney Brustein's Window*, *Disgraced* and *Sweet Bird of Youth*. Broadway highlights: *Junk*; *Meteor Shower*; *A Doll's House Part 2*; *The Front Page*; *It's Only a Play*; *Disgraced*; *Fish in the Dark*; *The Trip to Bountiful*; *Grace*; *Death of a Salesman*; *Seminar*; *Stick Fly*; *Bengal Tiger at the Baghdad Zoo*; *Lend Me a Tenor* and *Fences*. Television/Film includes: *New Amsterdam* (NBC); *American Odyssey* (NBC) and *Steel Magnolias* (Sony for Lifetime). Port is a five-time Artios Award winner, a recipient of the 40th Annual Media Access Awards and a proud member of the Casting Society of America.

SUSAN V. BOOTH (GOODMAN THEATRE WALTER ARTISTIC DIRECTOR) joined Goodman Theatre in the fall of 2022, having previously served as Artistic Director of Atlanta's Tony Award-winning Alliance Theatre, premiering new work that went on to national, international and commercial life. She has directed at The Goodman, Hartford Stage, National Playwrights Conference, The Contemporary American Theater Festival, La Jolla Playhouse, St. Louis Repertory Theatre, Cincinnati Playhouse, New York Stage and Film, Actors Theatre of Louisville, Northlight Theatre, Victory Gardens, Court Theatre and others. She has held teaching positions at Northwestern, DePaul and Emory Universities. She serves on the boards of the Erikson Institute and Denison University, the Executive Board of the Stage Directors and Choreographers Union, is past president of the Board of Directors for the Theatre Communications Group, the national service organization for the field, was a 2024 Leadership Greater Chicago Daniel Burnham Fellow, and is a member of the Chicago Network.

JOHN COLLINS (GOODMAN THEATRE EXECUTIVE DIRECTOR) began his career with a summer internship at the Goodman, where he has since served in various senior leadership positions over the past two decades. During his tenure, Collins has overseen numerous production transfers to Broadway, regional and international venues and tours of Goodman productions, including *The Who's TOMMY*; *Good Night, Oscar*; *War Paint*; *Desire Under the Elms*; and *Chinglish* (Broadway); *The Iceman Cometh* (New York/BAM); *The White Snake* (China); and *Luna Gale* (Los Angeles). He also helped open the Alice Rapoport Center for Education and Engagement—a 10,000 square foot center for expanded programming and activities. Collins is a past Chairman and current board member of the League of Chicago Theaters, and a board member of the Chicago Loop Alliance and the League of Resident Theatres (LORT). Collins also is a member of The Economic Club of Chicago. He is a graduate of Marquette University and resides in Chicago with his wife Melissa and their two children.

ABOUT

Since 1925, The Goodman has been more than a stage. A theatrical home for artists and a gathering space for community, it's where stories come to life—bold in artistry and rich in history, deeply rooted in the city it serves. Led by Walter Artistic Director Susan V. Booth and Executive Director John Collins, The Goodman sparks conversation, connection and change through new plays, reimagined classics and large-scale musicals. With distinctions including world and American premieres, Pulitzer Prizes, Tony Awards and Joseph Jefferson Awards, The Goodman is proud to be the first theater to produce all 10 plays of August Wilson's "American Century Cycle." But The Goodman believes a more empathetic, more connected Chicago is created one story at a time, and counts as its greatest legacy the community it's built. Generation-spanning productions and programs offer theater for a lifetime; from Theater for the Very Young (plays designed for ages 0-5) to the long-running annual *A Christmas Carol*, which has introduced new generations to theater over five decades, The Goodman is committed to being an asset for all of Chicago. The Goodman was founded by William O. Goodman and his family to honor the memory of Kenneth Sawyer Goodman—a visionary playwright whose bold ideas helped shape Chicago's early cultural renaissance. In 2000, through the commitment of Mr. Goodman's descendants—Albert Ivar Goodman and his late mother, Edith-Marie Appleton—The Goodman opened the doors to its current home in the heart of the Loop.

The Goodman stands on the homelands of the Council of the Three Fires—the Ojibwe, Odawa, and Potawatomi Nations—and acknowledges the many other Nations for whom this land now called Chicago has long been home, including the Myaamia, Ho-Chunk, Menominee, Sac and Fox, Peoria, Kaskaskia, Wea, Kickapoo, and Mascouten. The Goodman is proud to partner with the Gichigamiin Indigenous Nations Museum (Gichigamiin-Museum.org) and the Center for Native Futures (CenterForNativeFutures.org)—organizations devoted to honoring Indigenous stories, preserving cultural memory, and deepening public understanding.



THEATER FOR A LIFETIME

Our Education and Engagement department is where theater meets real life—using the power of the arts to inspire, educate and connect people, from birth through adulthood. Here we believe theater can help build a better Chicago by cultivating empathetic, informed citizens of all ages—people who value diverse stories and understand the power of community.

Through partnerships with schools, we collaborate with teachers to deepen student learning. For young people and adults, we amplify authentic voices and spark conversations about identity and lived experience. With families, we use artmaking to show what's possible, no matter who you are.

Whether it's a first-time performer discovering their voice, a teacher empowering students through storytelling or a family finding inspiration together, our work is rooted in community, creativity and change. Theater has the power to transform lives, not just for a moment, but for a lifetime.

Join us, and be part of the story. Learn more at GoodmanTheatre.org/engage-learn/



SECOND SATURDAYS

At Goodman Theatre, storytelling magic doesn't just happen on the stage—it lives in the voices, hands and imaginations of our community. Second Saturdays is where that magic comes to life—monthly arts programming for children (ages 4-10) and their families, designed to spark creativity, inspire self-expression and bring people together.

On the second Saturday of every month, families, friends and neighbors gather in the Alice for hands-on workshops led by Chicago artists, exploring everything from movement and music to visual arts and storytelling. Each session is a new adventure, offering an open invitation to create, discover and play—no experience necessary.

For young people, Second Saturdays is a space to dream big and build confidence. For adults, it's a chance to embrace creativity and connect with others. And for families, it's a shared experience of joy, curiosity and artistic exploration. At its heart, Second Saturdays is about access—ensuring that art belongs to everyone, no matter their age, background or expertise.

Join us and discover that storytelling isn't just something you watch—it's something you do.



YOUR STORY
STARTS HERE.
SCAN FOR EVENTS!





THE
G
O
O
D
M
A
N

1 FREE
O ACTS OF
O THEATER

Co-presented by DCASE

An epic citywide year-long event—100 Free Acts of Theater—activates all 50 wards of Chicago.

Designed as a celebration of the artistic fabric of our city during our Centennial Season, The Goodman is proud to partner with local organizations to amplify existing programming and collaborate on new efforts.

From artistic performances to special events to community engagement offerings, these events highlight the richness of Chicago's cultural landscape and honor the communities that have inspired and supported us over the past 100 years.

All 100 acts are offered FREE, with participation open to Chicagoans of all ages and backgrounds.

To learn more, visit GoodmanTheatre.org/FreeActs

2025/2026
EDUCATION AND ENGAGEMENT SPONSORS

SUPPORT FOR THE SCHOOL MATINEE SERIES

**POLK BROS
FOUNDATION**



MAJOR SUPPORT

MAJOR CORPORATE SPONSOR



CORPORATE SPONSOR PARTNER



PEOPLES GAS
NATURAL GAS DELIVERY

CROWN FAMILY
PHILANTHROPIES

MAGGIE AND
SCOTT PHILLIPS

ROBERT AND
CHERYL KOPECKY

ANTHONY AND
JULIANNE MAGGIORE

SUPPORTERS

SUPPORT FOR GENARRATIONS



SUPPORT FOR SUMMER YOUTH PROGRAMS



CORPORATE SUPPORT OF
PLAYBUILD YOUTH INTENSIVE

ANONYMOUS
BRUCE B. BOYD FOUNDATION
RICHARD AND ANN CARR
KATHLEEN AND JAMES COWIE
WALTER E. HELLER/
ALYCE DECOSTA FUND

CHRISTINE FINZER
ELAINE R. LEAVENWORTH
CYNTHIA AND MICHAEL SCHOLL
MICHAEL STEINBERG AND
SALME HARJU STEINBERG

SUPPORTERS

OVERALL SUPPORT FOR
EDUCATION AND ENGAGEMENT

THE
GOODMAN
WOMEN'S BOARD



SACHS FAMILY
FOUNDATION

CAROL PRINS
AND JOHN HART

FRUMAN AND
MARIAN JACOBSON

KIMBRA AND
MARK WALTER

MAJOR SUPPORTERS



THE A&A FUND

CAROL AND
DOUGLAS COHEN

DR. SCHOLL
FOUNDATION

SCOTT AND
LENORE ENLOE



THE HEARST
FOUNDATION, INC.



NATIONAL
ENDOWMENT for the ARTS
arts.gov

THE MURIEL POLLIA
FOUNDATION

STEVEN AND
LAUREN SCHEIBE

SIRAGUSA FAMILY
FOUNDATION

JUDY AND
ALEXANDER TOLAND



SUPPORTERS

COMMITMENTS AS OF FEBRUARY 19, 2026